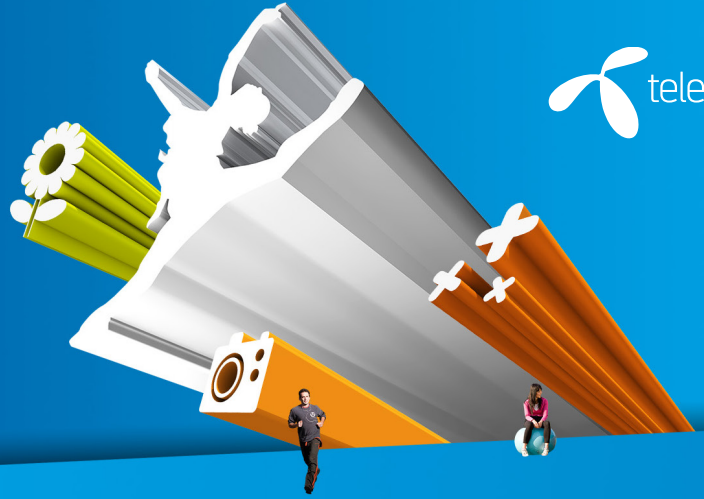


# GLOBAL DATA ROAMING



In today's fast changing mobile world, end users expect much from their mobile devices' functionality. They demand 24/7 service wherever they are, and a roam like home experience has already become a "must have" in our fast pacing industry. Bandwidth demanding and quality sensitive applications such as streaming, online gaming and browsing are popular as never before. To deliver top quality roaming data services seamlessly, operators need to access a global and secure IP network. This is where Telenor can help.



As communications technology continues to evolve, mobile subscribers expect their mobile handsets and mobile networks to be 4G capable. LTE ensures that future bandwidth requirements are met and mobile operators' products and capabilities meet subscriber's future expectations. LTE represents a move to a purely IP based network where Data Roaming is an essential component for addressing the new market opportunities. The data roaming transport is provided over IPX networks over the S8 interface.

## GLOBAL DATA ROAMING

The Telenor Data Roaming service provides you with full global coverage for your end users over our IPX Core network. The Data Roaming service acts as a hub for data roaming connections between mobile roaming partners. Together with your roaming agreements, the service enables immediate IP access and secures the roaming revenues with no requirements for expensive links between you and your roaming partner.

The Data Roaming service is provided over a fully managed and redundant IPX network and the service is compliant to the SLA guidelines defined

in GSMAs IR.34 PRD. Over an industry standard IPX network, the service enhances the user experience by leveraging the Quality of Service (QoS) capabilities.

Our customer web interface gives you access to near real time monitoring of the Class of Services (CoS) over the S8 interface.

Together with the LTE Roaming Exchange service, the Data Roaming service completes our LTE Roaming product portfolio.

## BENEFITS OF USING GLOBAL DATA ROAMING

Telenor provides a simple and reliable service for our quality conscious customers. We offer you:

- Fast connection to your roaming partners
- Worldwide 2G, 3G and 4G roaming coverage
- Support for CoS and QoS as defined in GSMA IR.34
- Fully compliant and dedicated IPX network isolated from the public internet
- Redundant Root DNS service
- Supports GTPv0, GTPv1 and GTPv2
- VoLTE ready
- The opportunity to connect directly to Telenor OpCos
- Online web interface, with CoS utilisation and performance

## OVERVIEW

- Experienced GRX provider, since 2000
- Managed connectivity solution with SLA
- Redundant Root DNS service
- Online access to Utilisation and Performance data, with CoS
- 24/7 Monitoring and Customer Support Center
- Service Level Agreement (SLA)

## ABOUT TELENOR GROUP

- Among the largest mobile operators in the world
- Telecom operations in the Nordic region, Central and Eastern Europe and Asia



Associate Member